

**10 dBA, 25 dBA
& 35 dBA**

**Silencers for
D125 GC – D200 GC**

Image shown might not reflect actual configuration.

Standard Features

- End Inlet / End Outlet can be adapted to different exhaust configurations for ease of installation
- Coated with satin black paint rated to 650°C to retain appearance and corrosion resistance over time
- Complete with condensate drain and plug
- Mild steel all welded construction for heavy duty application and corrosion resistance

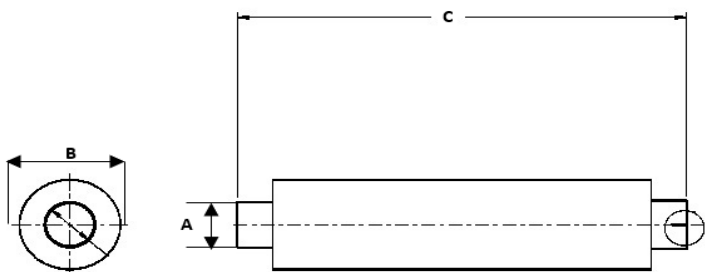


Image shown might not reflect actual configuration

Residential Silencer – 10 dBA

Generator Model	Freq	Sound Attenuation @ 100% Load	Dimensions			Weight
	Hz	dBA	Length (C) mm	Diameter (B) mm	Inlet Diameter (A) mm	Kg
D125 GC – D200 GC	60	10	890	200	102	12

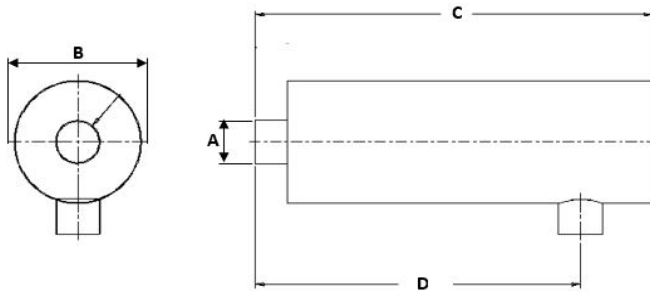


Image shown might not reflect actual configuration

Residential Silencer – 25 dBA

Generator Model	Freq	Sound Attenuation @ 100% Load	Dimensions				Weight
	Hz	dBA	Inlet Diameter Distance (D) mm	Length (C) mm	Diameter (B) mm	Inlet Diameter (A) mm	Kg
D125 GC – D200 GC	60	25	1205	1250	400	140	78

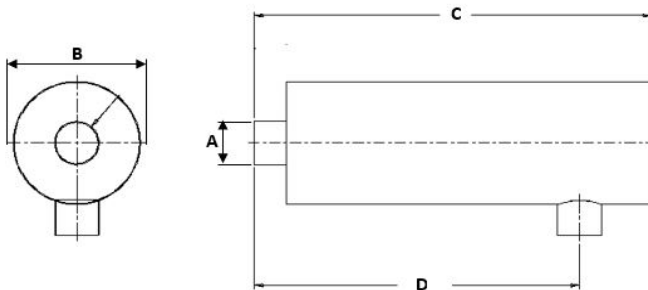


Image shown might not reflect actual configuration

Critical Silencer – 35 dBA

Generator Model	Freq	Sound Attenuation @ 100% Load	Dimensions				Weight
	Hz	dBA	Inlet Diameter Distance (D) mm	Length (C) mm	Diameter (B) mm	Inlet Diameter (A) mm	Kg
D125 GC – D200 GC	60	35	1550	1755	455	140	105

www.cat.com/electricpower

©2020 Caterpillar

All rights reserved.

Materials and specifications are subject to change without notice.

The International System of Units (SI) is used in this publication.

LET'S DO THE WORK.™

LEHE2682-00 (09/20)

CAT, CATERPILLAR, LET'S DO THE WORK, their respective logos, "Caterpillar Corporate Yellow, the "Power Edge" and Cat "Modern Hex" trade dress as well as corporate and product identity used herein, are trademarks of Caterpillar and may not be used without permission.